

# RCP2 change port product improvement - open

## Renishaw CMM products division

### Product bulletin: PBC-01980

<b>Product:</b>	RCP2	<b>Date:</b>	15/09/2016
<b>Originator:</b>	Gareth Puntis	<b>Reviewer:</b>	Andy Holding
<b>Classification</b> <input type="radio"/> Competitor info <input type="radio"/> Pricing changes <input type="radio"/> Product hold <input type="radio"/> Product launch <input checked="" type="radio"/> Product update		<b>Distribution</b> <input checked="" type="checkbox"/> Agents <input type="checkbox"/> Subsidiaries <input checked="" type="checkbox"/> Service centres <input checked="" type="checkbox"/> Retrofitters	
<input type="radio"/> Recall <input type="radio"/> Quality issue <input type="radio"/> Literature <input type="radio"/> Obsolescence		<input checked="" type="checkbox"/> Distributors <input checked="" type="checkbox"/> End users <input checked="" type="checkbox"/> OEMs	

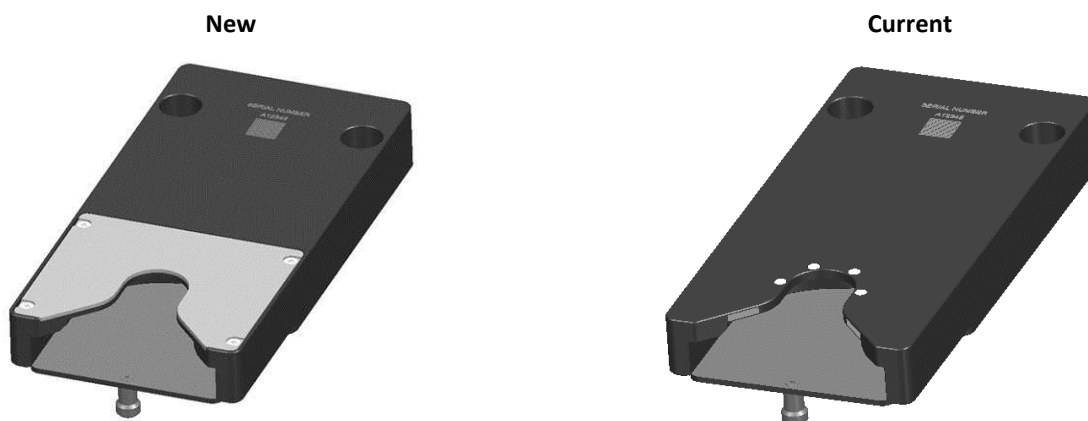
#### Summary:

As part of ongoing improvements to REVO®, Renishaw has released a new version of the RCP2 change port. The RCP2 is designed for storing and changing stylus holders for RSP2, RSP3-6 and SFP. The new version offers improved change port life and better performance when changing stylus holders. This has been achieved by introducing new magnets and covering the previously exposed magnets.

The new port is now in production and will be cut in during the next few weeks, depending on stocks within the supply chain.

**Please note:** There is no change in list price between the new and current RCP2.

The new RCP2 port can be identified by the new metal cover plate on the underside of the unit.



If you have any questions or comments on this bulletin please visit [www.renishaw.com/cmmsupport](http://www.renishaw.com/cmmsupport) and use the 'Email support' facility. This will ensure that your call is logged and processed efficiently.

---

**Further details:**

---

There is no need to swap out RCP2 units currently in place. There are no backward compatibility issues and both the new and old RSP2s can be used on the same rack.

---

**Part numbers:**

---

The new RCP2 will have the same part number and price as the current version of the product.

<b>Product description</b>	<b>Part number</b>
RCP2 change port	A-3060-0090

If you have any questions or comments on this bulletin please visit [www.renishaw.com/cmmsupport](http://www.renishaw.com/cmmsupport) and use the 'Email support' facility. This will ensure that your call is logged and processed efficiently.