

Renishaw Capital Markets Day 2023

Welcome

Will Lee
Chief Executive

Transforming Tomorrow Together

We make it possible to create the products, materials and therapies that will define our world in the decades to come and touch billions of lives



Machine shop



Semiconductor
manufacturing
equipment



Laboratory &
clinic

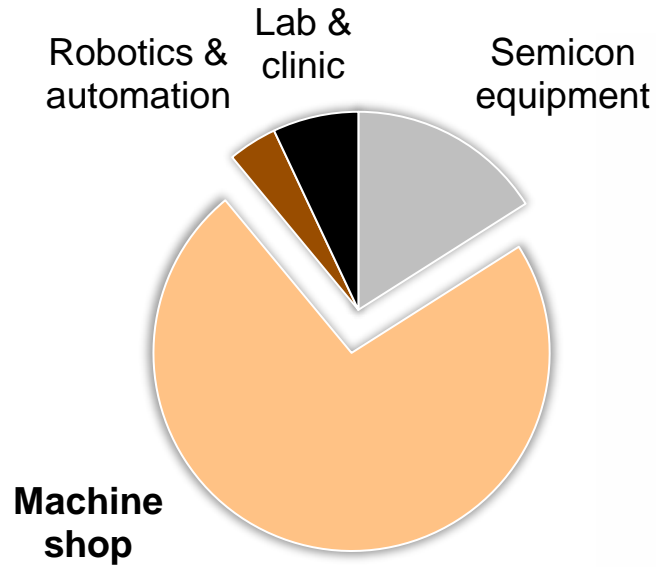


Robotics and
automation



Workshop: Markets & strategy

Renishaw in the machine shop



Growth drivers

- ▲ Higher product performance
- ▲ Shop-floor metrology
- ▲ Enhanced automation
- ▲ Autonomous factories

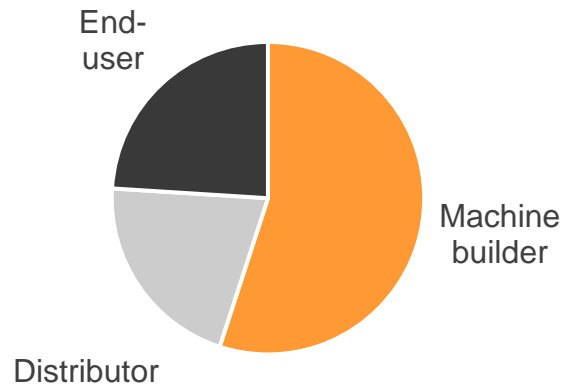
Sensors

Enhance our leading position

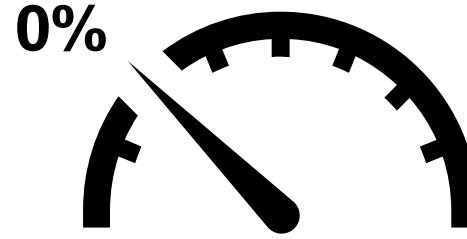
- Strengthen product portfolio
- Increase fitment levels
- Win new customers

PRODUCTS

- CMM sensors
- Machine tool probes
- Calibration
- Enclosed encoders



Track record of growing fitment levels



Global apparent machine tool consumption CAGR 2010-2023¹



Renishaw machine tool sensors revenue CAGR 2010-2023²

Driven by continual product innovation



Intuitive probing apps



NC4+ Blue tool setter



FORTiS™ encoder



Workshop: Sales strategy

Notes

- Compound annual growth rate of Machine tool apparent consumption between 2010 and 2023, source: Oxford Economics Global Machine Tool Survey (autumn 2022 forecast)
- Compound annual growth rate of Renishaw machine tool sensor revenue from FY2010 to FY2023

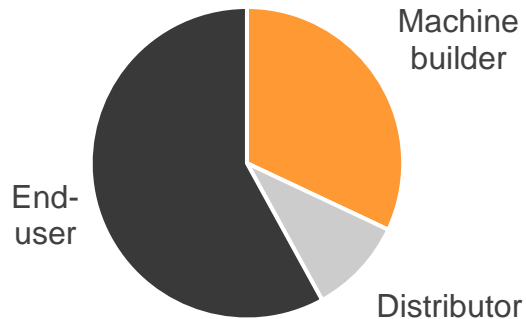
Metrology systems

Build market-leading position

- 🎯 Product innovation
- 🎯 Practical software
- 🎯 Smart factory solutions

PRODUCTS

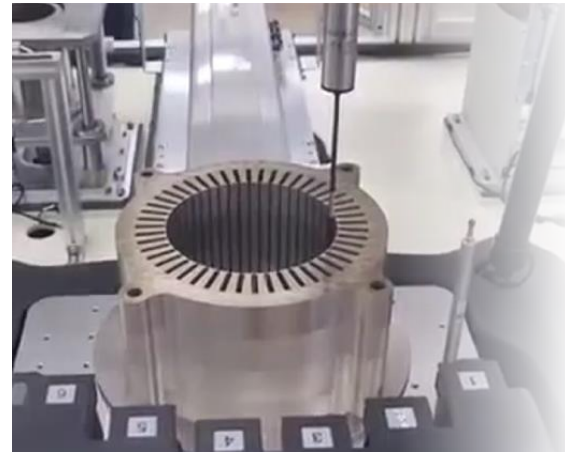
- CMM systems
- Gauging systems
- Metrology software
- Renishaw Central



Growth in 5-axis, high-speed, multi-sensor CMM systems



Wider use of flexible gauges for EV shop-floor metrology



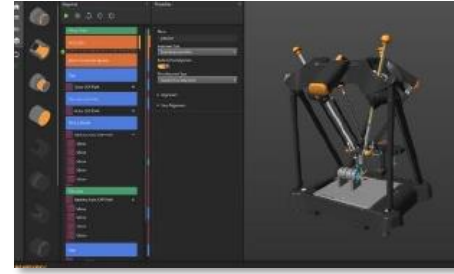
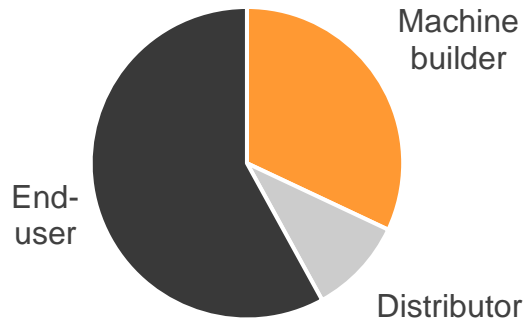
Workshop: Sales strategy

Metrology systems

Build market-leading position

- Product innovation
- Practical software
- Smart factory solutions

- PRODUCTS**
- CMM systems
 - Gauging systems
 - Metrology software
 - Renishaw Central



EQUATOR™ gauge

Updates to control process



CNC turning centre

Turned parts for gauging



NEW: MODUS™ IM Gauge & Control
New generation of easy-to-use metrology software



Workshop: IM software strategy

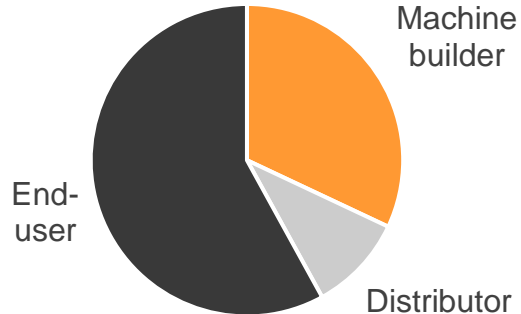
Metrology systems

Build market-leading position

- 🎯 Product innovation
- 🎯 Practical software
- 🎯 Smart factory solutions

PRODUCTS

- CMM systems
- Gauging systems
- Metrology software
- Renishaw Central



NEW: Renishaw CENTRAL

Accurate, actionable data across the shop floor



Workshop: IM software strategy

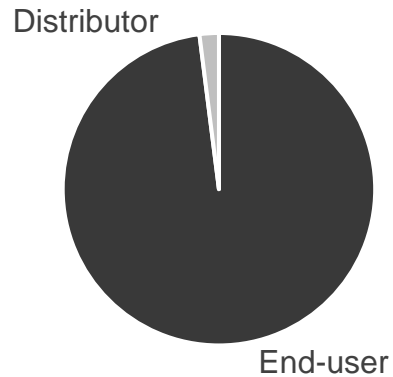
Additive manufacturing

Build market-leading position

- Product innovation
- Key account growth
- Minimise embodied carbon

PRODUCTS

- AM machines
- Build preparation software
- Process monitoring

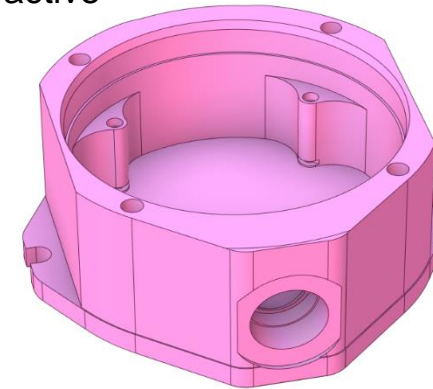


NEW: Faster builds & improved melting precision

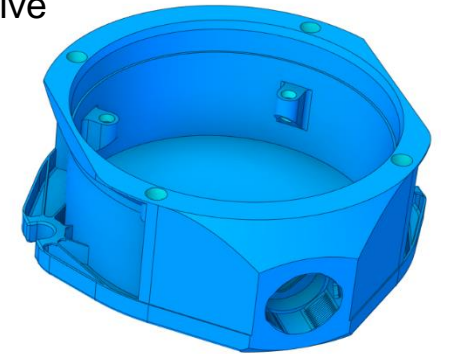
Patented optical system verification using sphere array and MeltVIEW sensors



Subtractive



Additive



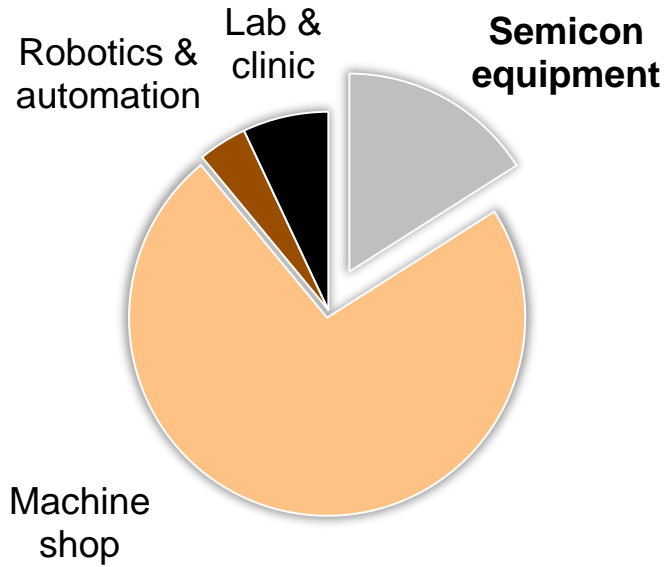
Additive enables dramatic reduction in part volume, material consumption and embodied carbon

96% reduction in material consumption



Workshop: Net Zero (incl. use of AM)

Renishaw in the semicon fab



Growth drivers

- ▲ New high-spec devices
- ▲ Consumer devices, cloud, AI, 5G
- ▲ Enhanced fab automation
- ▲ Reshoring of manufacturing

Sensors

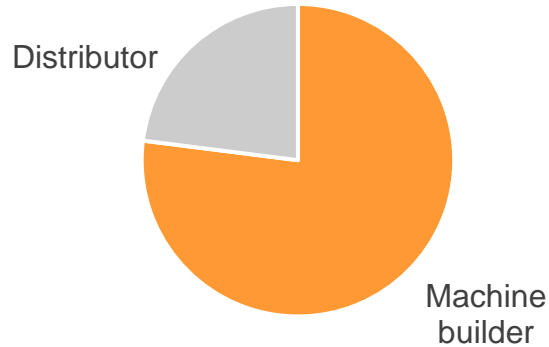
Enhance our leading position

 Strengthen product portfolio

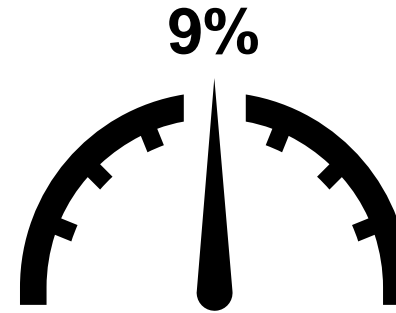
 Win new customers

PRODUCTS

- Optical encoders
- Magnetic encoders
- Laser encoders



Track record of winning new customers



Semiconductor capital equipment expenditure CAGR 2010-2023¹



Renishaw position encoder revenue CAGR 2010-2023²

Underpinned by an innovative product range



Optical encoders



Laser encoders

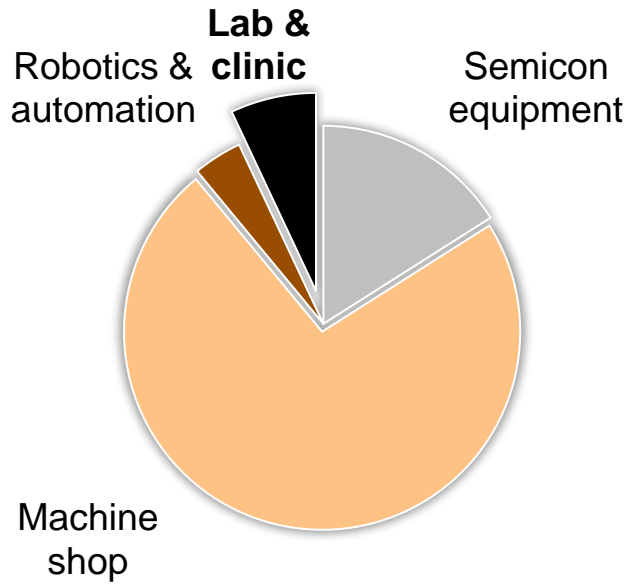


Workshop: Sales strategy

Notes

1. Compound annual growth rate of Semiconductor capital equipment expenditure between 2010 and 2023, source: Statistica / Semi.org
2. Compound annual growth rate of Renishaw optical, magnetic and laser position encoder revenue from FY2010 to FY2023

Renishaw in the lab & clinic

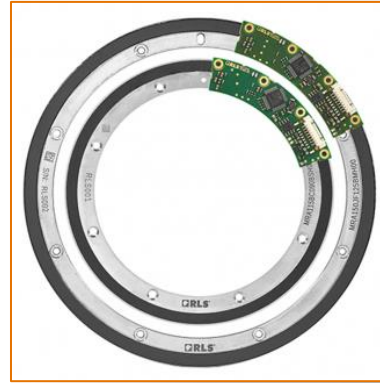
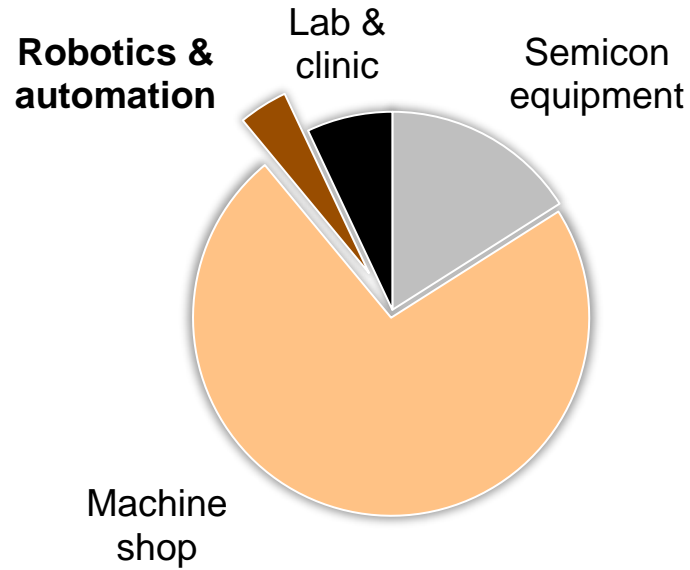


Growth drivers

- ▲ Steady growth in research globally
- ▲ Rising battery research
- ▲ Raman increasingly used for control of industrial processes
- ▲ New therapies for neurological disorders

Workshop: Spectroscopy

Renishaw in robotics & automation



Magnetic rotary encoder

Growth drivers

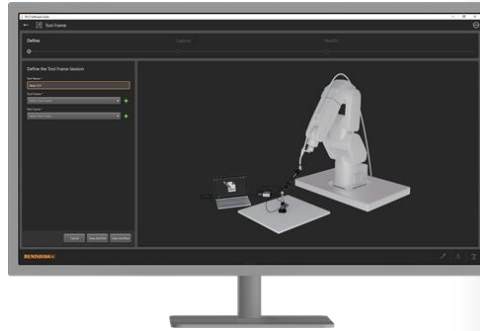
- ▲ High labour costs & skills shortages
- ▲ Re-shoring of manufacturing
- ▲ Warehouse automation
- ▲ Collaborative robotics



Industrial Automation

Drive long-term growth

- 🎯 Close-adjacent market
- 🎯 >10% underlying market growth
- 🎯 Unmet customer needs
- 🎯 Innovative, patented solutions



NEW: Industrial automation line – calibration, set-up and diagnostics of industrial robots

Enable robots to be used for higher accuracy tasks

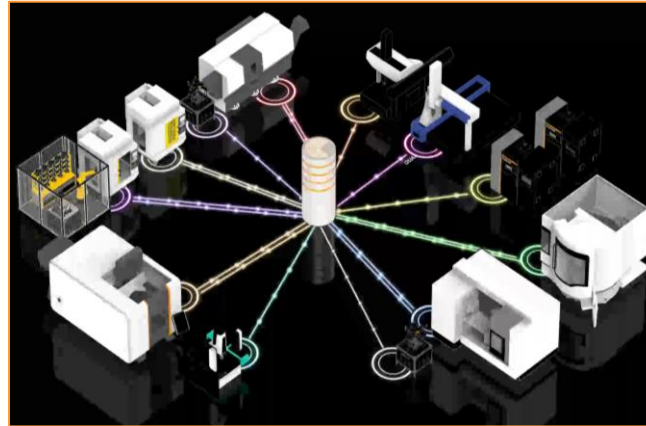


Workshop: Robot metrology

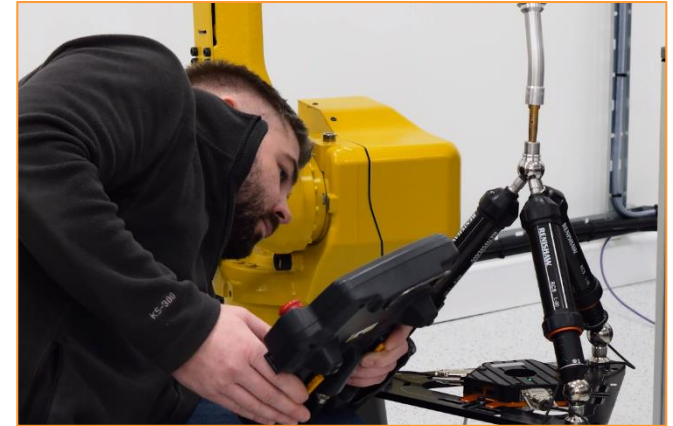
Our strategic direction



Sensors



Systems



New markets