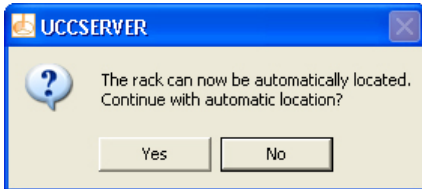


RCP TC-2

UCCsuite 4.8 or later is required to correctly identify RCP TC-2. It can be set up in older versions of UCCsuite as the legacy RCP TC, but the auto-alignment routine should not be used. If auto-alignment is used in versions of UCCsuite earlier than 4.8, the port alignment will be incorrect resulting in probe change failure.

Setting-up RCP TC-2 as an RCP TC unit with UCCsuite 4.7 and older

1. Locate the port as a RCP TC unit using the standard manual procedure.
2. Select 'No' when the following prompt appears:



3. Following this, the port should be correctly set up.



CAUTION: Using the automatic locate setting will cause a probe change failure when RCP TC-2 is set-up as a legacy RCP TC unit.

RENISHAW HAS MADE CONSIDERABLE EFFORTS TO ENSURE THE CONTENT OF THIS DOCUMENT IS CORRECT AT THE DATE OF PUBLICATION BUT MAKES NO WARRANTIES OR REPRESENTATIONS REGARDING THE CONTENT. RENISHAW EXCLUDES LIABILITY, HOWSOEVER ARISING, FOR ANY INACCURACIES IN THIS DOCUMENT.