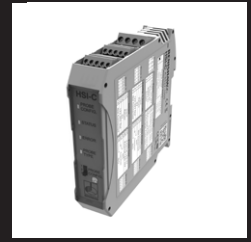


HSI-C



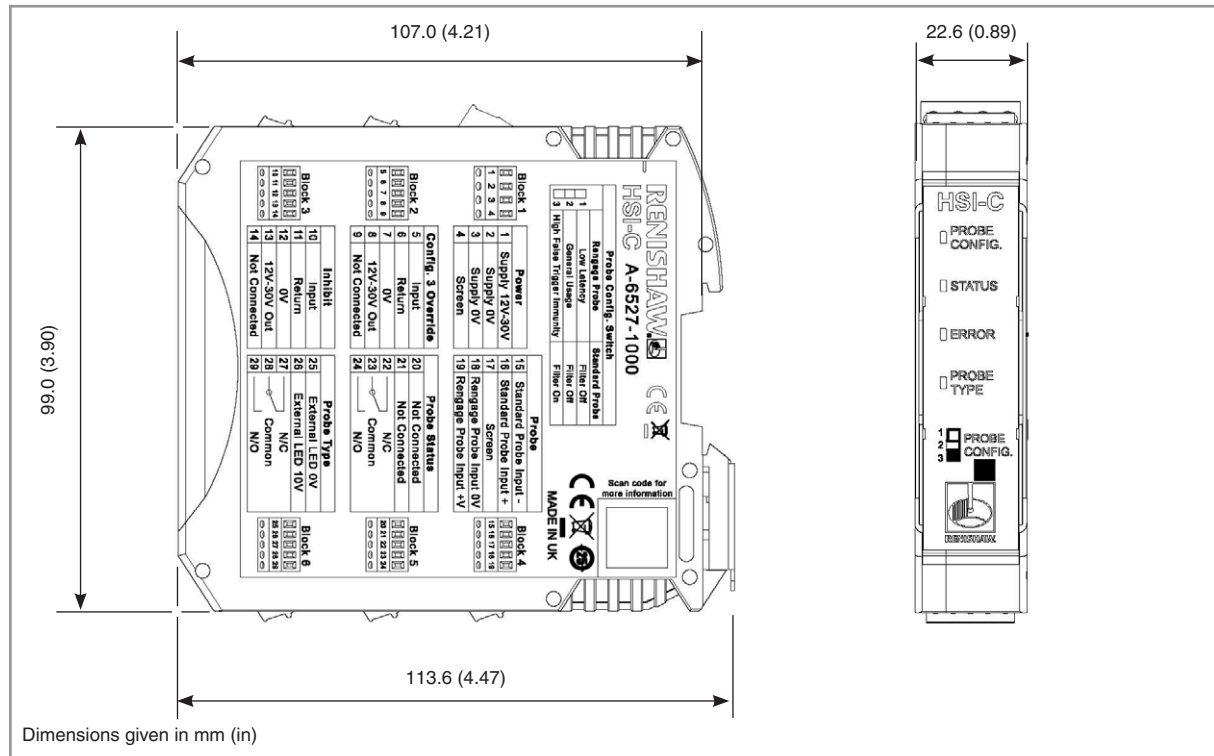
www.renishaw.com/hsi-c

Specification

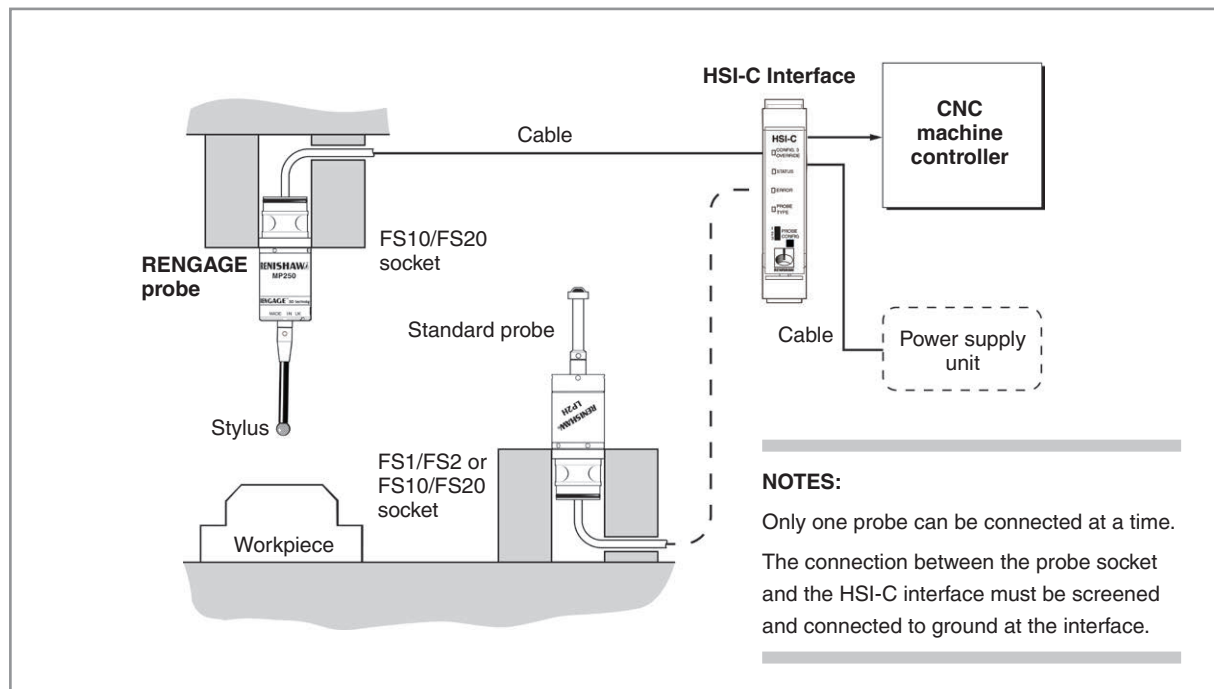
Principal application	The HSI-C processes signals from RENGAGE™ or standard hard-wired probes and converts them into voltage-free solid-state relay (SSR) outputs, which are then transmitted to the CNC machine controller.	
Transmission type	Hard-wired	
Probes per system	One	
Compatible probes	MP250, LP2, TS27R, RP3, TS20, TS34	
Supply voltage	12 Vdc to 30 Vdc	
Supply current	110 mA @ 12 Vdc, 80 mA @ 24 Vdc	
Outputs	Probe status SSR, Probe type SSR	
Inputs	Probe inhibit, Config. 3 override	
Output signal	Voltage-free SSR output, normally open or normally closed.	
Input/output protection	SSR output is protected by overcurrent circuitry, the output current should not exceed 50 mA. Power input is protected by a 140 mA resettable fuse.	
Diagnostic LEDs	Error, status, probe type and probe config. Connection provided for remote device (LED or buzzer).	
Probe operating configurations	For standard probes, a trigger filter can be selected to reduce false triggers caused by machine vibration. For second-generation MP250, a low latency configuration or a high false trigger resistant configuration may be selected.	
Mounting	DIN rail	
Environment	Storage temperature	-25 °C to +70 °C (-13 °F to +158 °F)
	Operating temperature	+5 °C to +55 °C (+41 °F to +131 °F)

For further information and the best possible application and performance support, contact Renishaw or visit www.renishaw.com/hsi-c

HSI-C dimensions



Typical HSI-C installation



Spare parts and accessories

A full range of spare parts and accessories is available.
 Contact Renishaw for a full list.

For worldwide contact details, visit www.renishaw.com/contact

RENISHAW HAS MADE CONSIDERABLE EFFORTS TO ENSURE THE CONTENT OF THIS DOCUMENT IS CORRECT AT THE DATE OF PUBLICATION BUT MAKES NO WARRANTIES OR REPRESENTATIONS REGARDING THE CONTENT. RENISHAW EXCLUDES LIABILITY, HOWSOEVER ARISING, FOR ANY INACCURACIES IN THIS DOCUMENT.

