



## RCS spindle calibration kit

**For users of the RCS P-series, RCS spindle calibration kit is designed to achieve rapid 5 degrees of freedom (DoF) calibration of robot-mounted spindles.**

Automatically calibrate your spindle using a Renishaw tool setter with a spindle calibration disc stylus. Achieve 5 DoF calibration by taking measurements at several orientations using a ball-ended spindle artefact on the top and side of the disc, followed by a tool length setting measurement with the cutting tool in place. The spindle tool centre point (TCP) and vector are automatically updated directly in the robot controller.

RCS spindle calibration kit requires the RCS P-series tool setter to function.

## Benefits and features

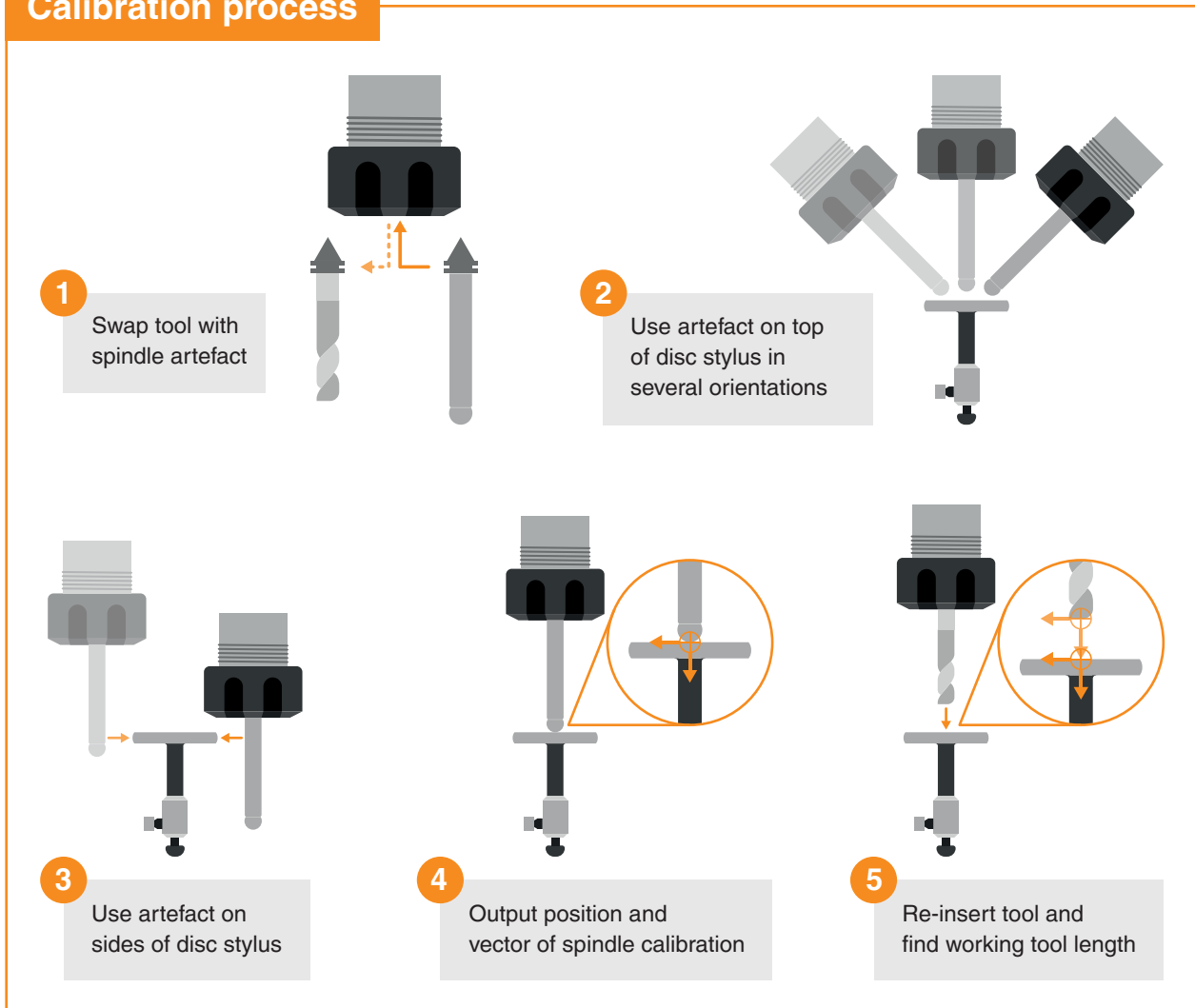
RCS spindle calibration kit offers a quick and easy way to update tool length and vector after tool change or wear on a robot-mounted spindle:

- Intuitive, software-guided process
- Save time and money with this repeatable procedure
- Add confidence to your machining applications by accurately updating the tool in 5 DoF

## Kit includes:

- Disc stylus
- Disc stylus extension
- Ball-ended spindle artefact
- Spindle calibration software

## Calibration process



Please refer to the RCS P-series hardware to select a suitable option for your application.

[www.renishaw.com/industrial-automation](http://www.renishaw.com/industrial-automation)



#renishaw

+44 (0) 1453 524524

industrialautomation@renishaw.com

© 2025 Renishaw plc. All rights reserved. RENISHAW® and the probe symbol are registered trade marks of Renishaw plc. Renishaw product names, designations and the mark 'apply innovation' are trade marks of Renishaw plc or its subsidiaries. Other brand, product or company names are trade marks of their respective owners. Renishaw plc. Registered in England and Wales. Company no: 1106260. Registered office: New Mills, Wotton-under-Edge, Glos, GL12 8JR, UK.

WHILE CONSIDERABLE EFFORT WAS MADE TO VERIFY THE ACCURACY OF THIS DOCUMENT AT PUBLICATION, ALL WARRANTIES, CONDITIONS, REPRESENTATIONS AND LIABILITY, HOWSOEVER ARISING, ARE EXCLUDED TO THE EXTENT PERMITTED BY LAW.

Part no.: H-6852-8006-02-A