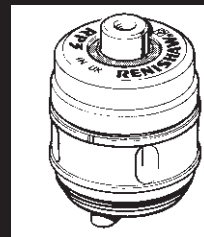


RP3 tool setting probe

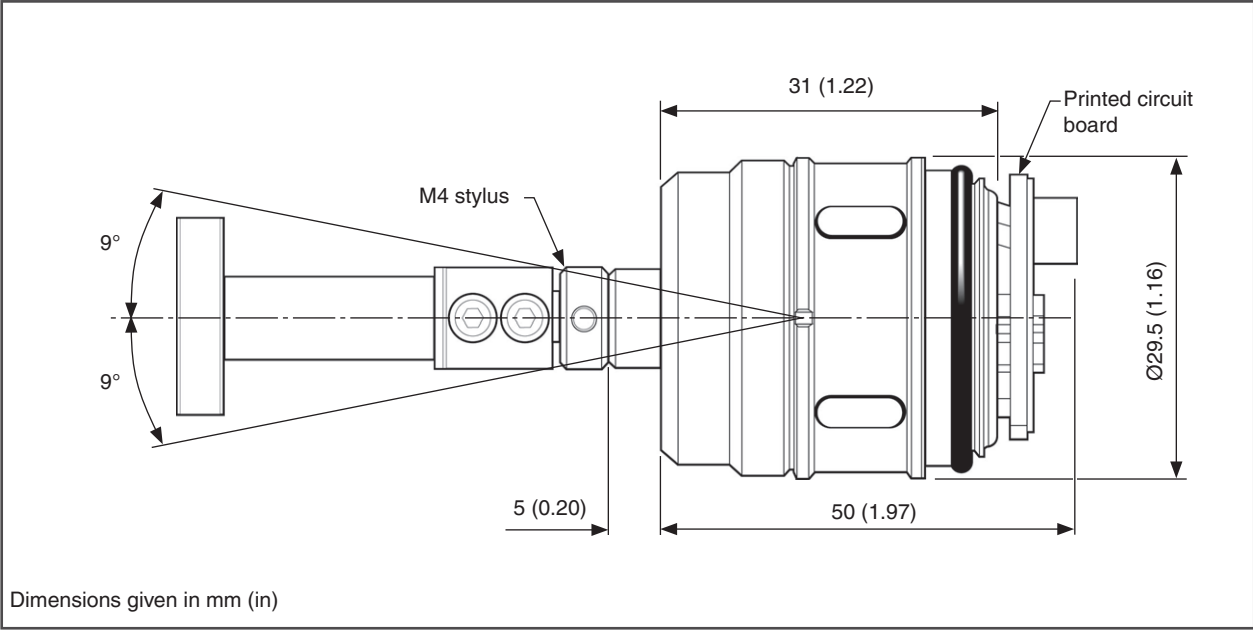


Specification

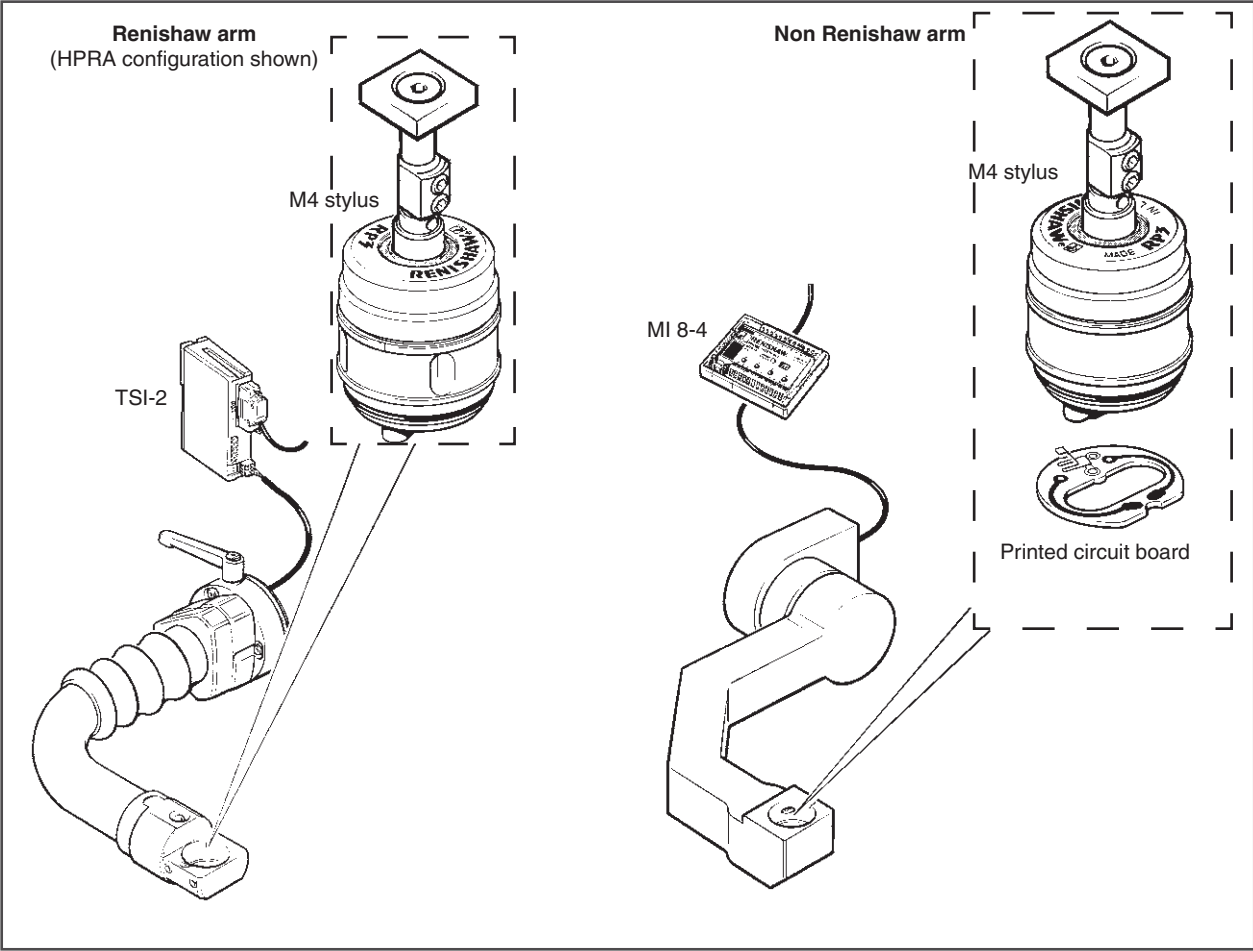
Principal application	Manual and automatic tool setting arms on 2-axis and 3-axis lathes.	
Weight	80 g (2.82 oz)	
Transmission type	Hard-wired transmission	
Recommended styli	48.75 mm (1.92 in)	
Probe outputs	OEM kit including connection PCB	
Compatible interfaces	MI 8-4, TSI 2, TSI 2-C, TSI 3, TSI 3-C	
Sense directions	5-axis $\pm X$, $\pm Y$, $+Z$ ¹	
Unidirectional repeatability	1.00 μm (40 μin) 2σ ²	
Stylus trigger force ^{3 4}		
XY low force	1.50 N, 153 gf (5.40 ozf)	
XY high force	3.50 N, 357 gf (12.59 ozf)	
+Z direction	12.00 N, 1224 gf (43.16 ozf)	
Stylus overtravel	XY plane +Z plane	$\pm 9^\circ$ 2 mm (0.08 in)
Environment	IP rating	IPX8, BS EN 60529:1992+A2:2013
	Storage temperature	-10 °C to +70 °C (+14 °F to +158 °F)
	Operating temperature	+5 °C to +55 °C (+41 °F to +131 °F)

- ¹ Where the RP3 is to be used in the probe's Z-axis (the lathe Y-axis), then a five-faced stylus is available to order from Styli and Fixturing.
- ² Products Performance specification is tested at a standard test velocity of 480 mm/min (18.9 in/min) with a 35 mm stylus. Significantly higher velocity is possible depending on application requirements.
- ³ Trigger force, which is critical in some applications, is the force exerted on the component by the stylus when the probe triggers. The maximum force applied will occur after the trigger point (overtravel). The force value depends on related variables, including measuring speed and machine deceleration.
- ⁴ These are the factory settings; manual adjustment is not possible.

RP3 dimensions



Installing the RP3

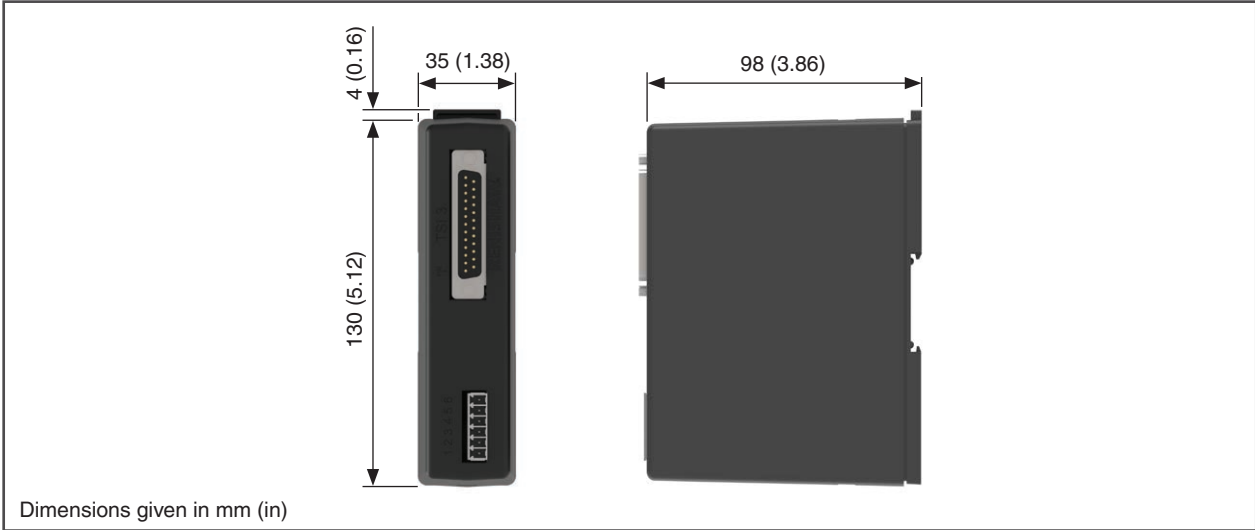


Interfaces

One of three types of interface must be used in conjunction with the RP3 probe kit.

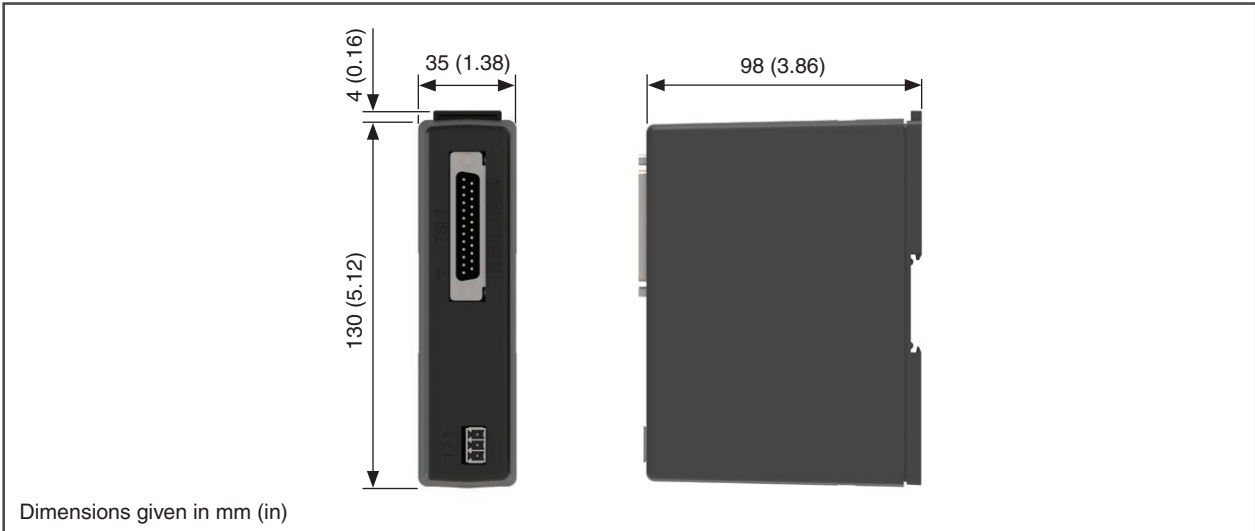
TSI 3 and TSI 3-C dimensions

A TSI 3 interface unit must be used with the Renishaw HPMA.



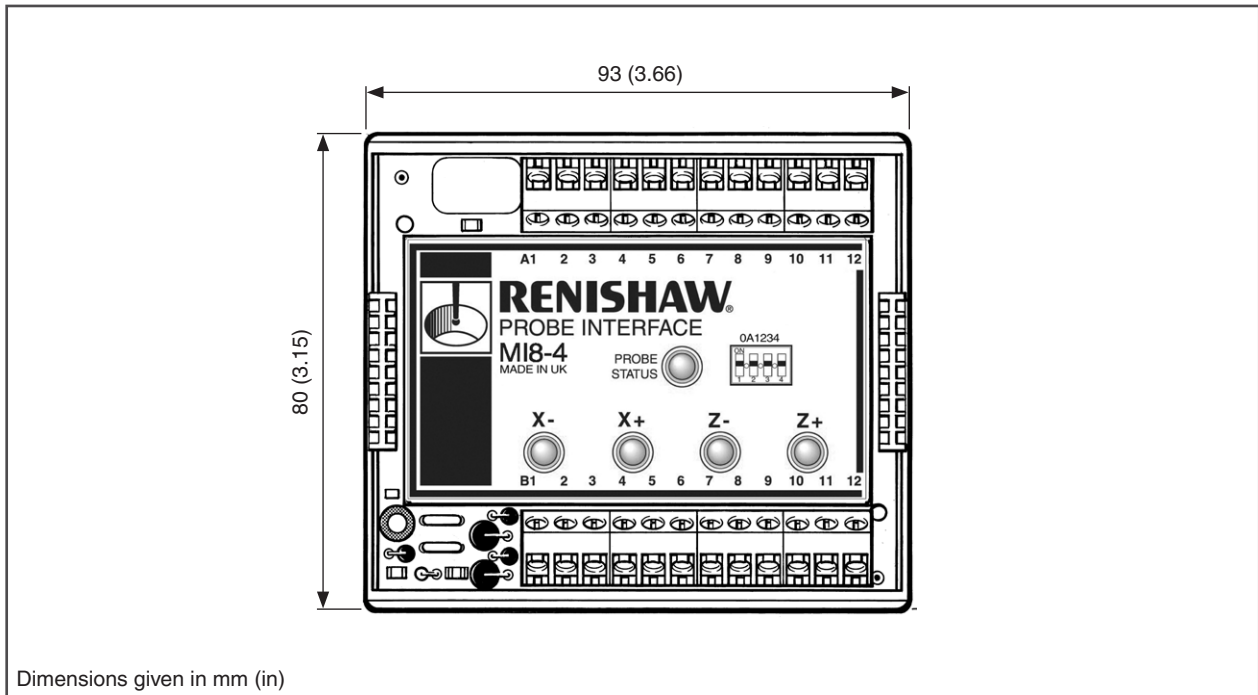
TSI 2 and TSI 2-C dimensions

A TSI 2 interface unit must be used with the Renishaw HPRA or HPPA.



MI 8-4 dimensions

A MI 8-4 interface unit must be used with any other type of arm.



Spare parts and accessories

A full range of spare parts and accessories is available. Contact Renishaw for a full list.

www.renishaw.com/rp3



#renishaw

+44 (0) 1453 524524

uk@renishaw.com

© 1999–2024 Renishaw plc. All rights reserved. This document may not be copied or reproduced in whole or in part, or transferred to any other media or language by any means, without the prior written permission of Renishaw.

RENISHAW® and the probe symbol are registered trade marks of Renishaw plc. Renishaw product names, designations and the mark 'apply innovation' are trade marks of Renishaw plc or its subsidiaries. Other brand, product or company names are trade marks of their respective owners.

WHILE CONSIDERABLE EFFORT WAS MADE TO VERIFY THE ACCURACY OF THIS DOCUMENT AT PUBLICATION, ALL WARRANTIES, CONDITIONS, REPRESENTATIONS AND LIABILITY, HOWSOEVER ARISING, ARE EXCLUDED TO THE EXTENT PERMITTED BY LAW. RENISHAW RESERVES THE RIGHT TO MAKE CHANGES TO THIS DOCUMENT AND TO THE EQUIPMENT, AND/OR SOFTWARE AND THE SPECIFICATION DESCRIBED HEREIN WITHOUT OBLIGATION TO PROVIDE NOTICE OF SUCH CHANGES.

Renishaw plc. Registered in England and Wales. Company no: 1106260. Registered office: New Mills, Wotton-under-Edge, Glos, GL12 8JR, UK.

Part no.: H-2000-2014-07-A

Issued: 09.2024