

MCU E-STOP repair leaflet

www.renishaw.com/cmm

Step 1

Remove cable clamp and unplug cable. Remove rubber feet and Renishaw sticker to access screws.



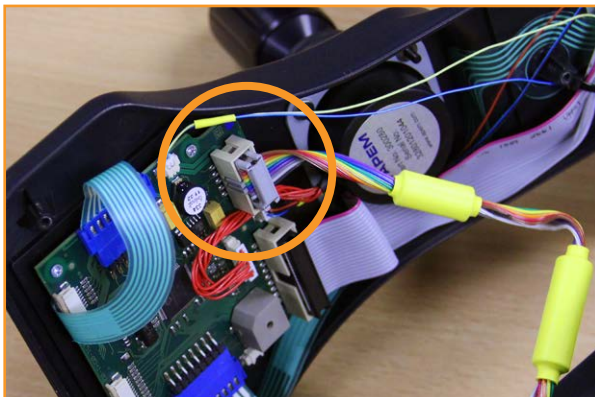
Step 2

Use a Philips screwdriver to remove the six screws that join the two halves of the joystick body together.



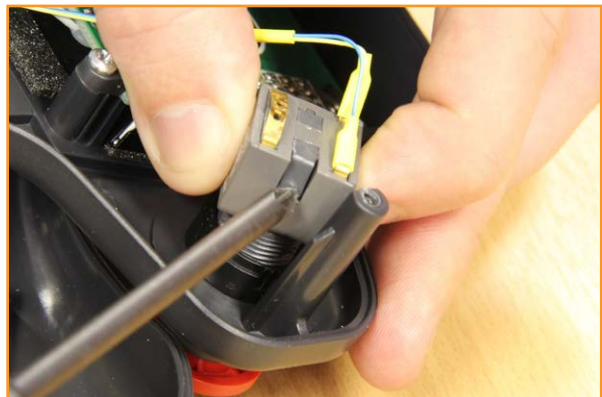
Step 3

Unplug cable to enable joystick body to be separated.



Step 4

Use the screwdriver to push the catch and remove the switch contact block from the bottom of the E-STOP button.



Step 5

Remove the plastic nut from the E-STOP button.



Step 6

Add the new washer over the thread. Ensure the cut out in the washer is located over the extruded plastic section.



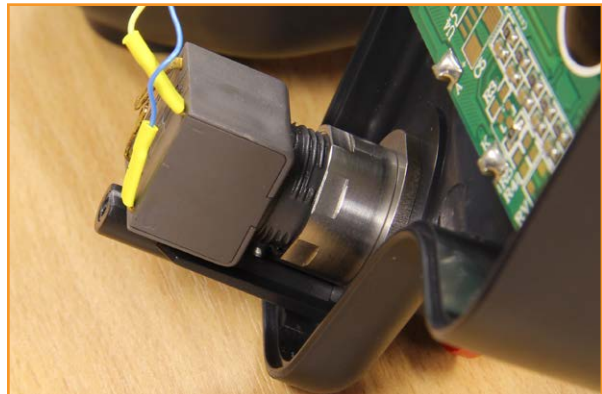
Step 7

Screw the new metal nut over the thread and hand tighten.
Ensure the tab on button assembly is located as shown below:



Step 8

Reattach the switch contact block to the end of the E-STOP button assembly.



Step 9

Reconnect cable. Put the two parts of the joystick body together and replace screws, rubber feet, and Renishaw sticker.



For worldwide contact details, please visit our
main web site at www.renishaw.com/contact

